

Life-Altering Crash Facts

Every 15 hours in our region, someone experiences a life-altering traffic crash.



IN THE KNOXVILLE REGION IN THE LAST FIVE YEARS

2,979
traffic crashes resulted in
fatality or serious injury

447
of those traffic crashes
involved a fatality

2,532
of those traffic crashes
involved a serious injury

We've identified a handful of **common factors** in these life-altering traffic crashes. Here are those factors by the numbers. (More than one factor can be involved in a crash.)

 Serious injury crashes
 Fatal crashes



Single-motor-vehicle only



Senior driver



Teen driver



Motorcycle-related



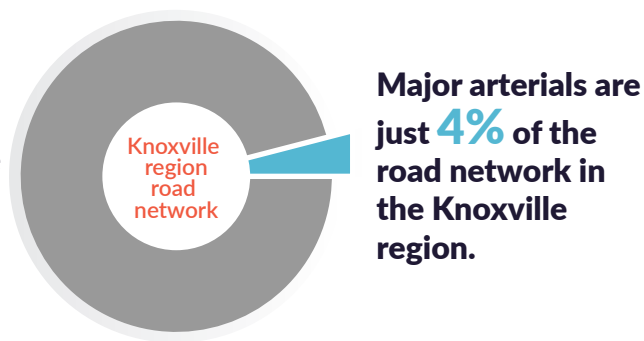
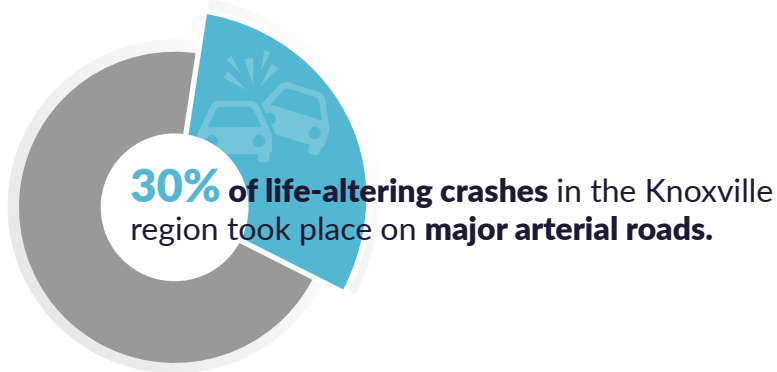
DUI



Pedestrian or bicycle-related



Life-Altering Crashes on Major Arterials



KNOXVILLE REGION MAJOR ARTERIALS

12 roadways account for **most of these crashes**.

1. Henley Street
2. W. Broadway in Maryville
3. Magnolia Avenue
4. Broadway in Knoxville
5. Western Avenue
6. Chapman Highway
7. Clinton Highway
8. Alcoa Highway
9. Asheville Highway
10. Rutledge Pike
11. Illinois Avenue
12. Clinch Avenue in Clinton

• Order is most to least crashes per mile

Crashes on major arterials are more likely to involve senior drivers.

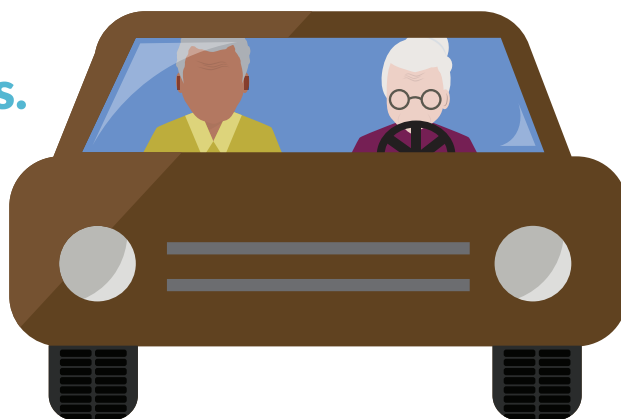
A senior driver (age 65+) is involved in:

20%

of life-altering crashes on **all street types**

27%

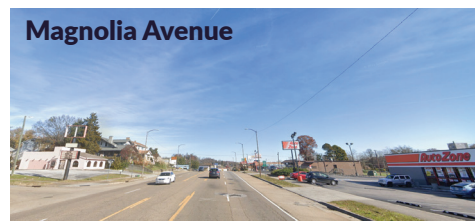
of life-altering crashes on **major arterials**



Henley Street



W. Broadway in Maryville



Magnolia Avenue



Chapman Highway



Alcoa Highway



Clinch Avenue in Clinton

Time of Life-Altering Crashes

Some of these crash types occur more often on certain days and times of day.

Crashes involving **a suspected DUI** occur most often on **weekends in the late evening and early morning.**

	Midnight 4am	4am 8am	8am noon	noon 4pm	4pm 8pm	8pm midnight
Sunday	16	5	4	8	15	14
Monday	10	2	4	6	7	12
Tuesday	5	4	8	7	11	11
Wednesday	6	5	3	4	16	12
Thursday	4	3	6	7	11	9
Friday	11	3	3	7	16	16
Saturday	19	8	7	6	13	19

Crashes involving **a teen driver** happen most frequently in the **afternoons** and **evenings.**

	Midnight 4am	4am 8am	8am noon	noon 4pm	4pm 8pm	8pm midnight
Sunday	13	1	3	7	12	12
Monday	3	6	15	14	20	7
Tuesday	2	2	3	15	16	7
Wednesday	3	5	2	15	29	14
Thursday	2	4	9	8	13	13
Friday	2	3	8	21	20	13
Saturday	8	4	6	12	17	9

Crashes involving **a senior driver (65+)** happen most frequently on **weekday afternoons.**

	Midnight 4am	4am 8am	8am noon	noon 4pm	4pm 8pm	8pm midnight
Sunday	4	0	15	24	13	6
Monday	4	7	20	30	27	6
Tuesday	1	8	30	39	40	8
Wednesday	4	5	23	33	26	5
Thursday	3	7	23	25	25	7
Friday	2	3	18	28	23	6
Saturday	1	1	18	19	17	5

Crashes involving people on **motorcycles** tend to occur most often on **weekends** and **during early-evening hours.**

	Midnight 4am	4am 8am	8am noon	noon 4pm	4pm 8pm	8pm midnight
Sunday	7	0	7	20	22	10
Monday	2	4	8	7	12	10
Tuesday	0	6	3	8	16	10
Wednesday	3	3	7	11	18	7
Thursday	5	1	11	10	15	11
Friday	2	0	7	12	18	11
Saturday	8	1	8	21	22	18

Crashes involving people on **bicycles** happen most frequently in the **afternoons** and **early evenings.**

	Midnight 4am	4am 8am	8am noon	noon 4pm	4pm 8pm	8pm midnight
Sunday	1	0	2	2	1	2
Monday	0	1	0	2	1	1
Tuesday	0	0	0	1	3	1
Wednesday	2	1	1	1	2	1
Thursday	2	0	0	1	2	1
Friday	1	0	1	3	3	1
Saturday	0	1	1	0	1	0

Crashes involving people **walking** happen most often in the **evening hours.**

	Midnight 4am	4am 8am	8am noon	noon 4pm	4pm 8pm	8pm midnight
Sunday	8	1	1	3	6	5
Monday	5	4	5	5	4	15
Tuesday	0	6	3	1	7	7
Wednesday	1	2	5	6	9	4
Thursday	2	3	5	8	9	5
Friday	2	4	1	5	9	13
Saturday	7	1	6	6	7	8

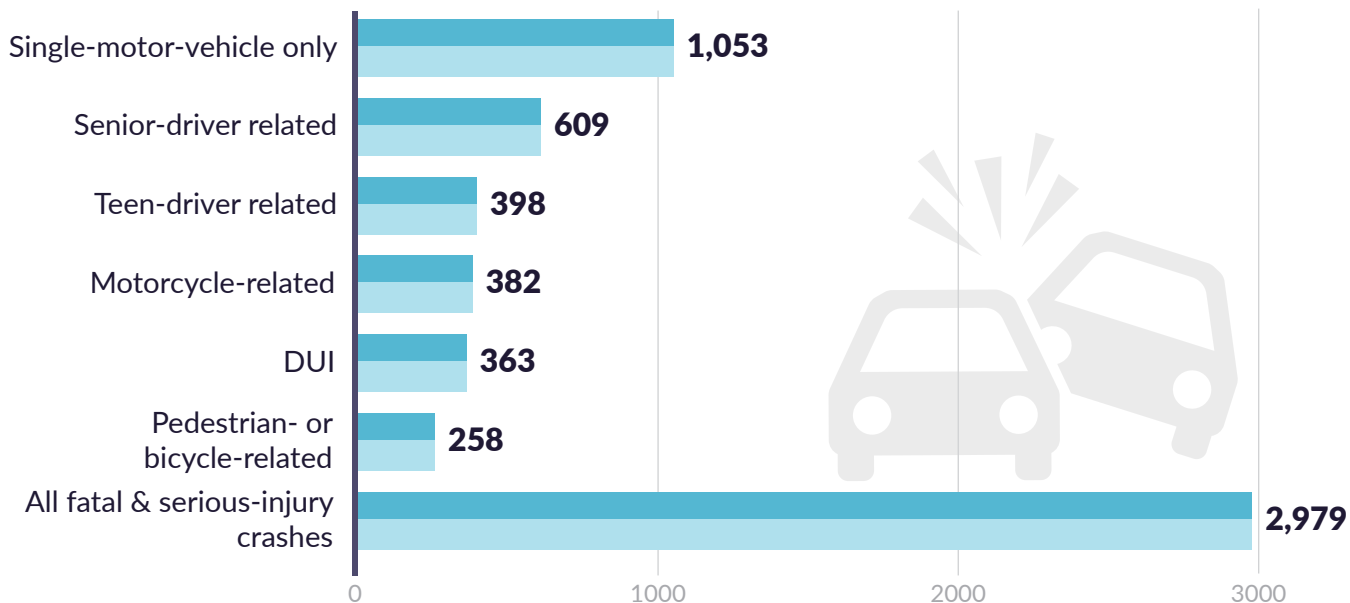
Single-motor-vehicle only crashes (no other vehicles or road users) tend to occur most often in the **early morning.**

	Midnight 4am	4am 8am	8am noon	noon 4pm	4pm 8pm	8pm midnight
Sunday	51	13	10	25	36	31
Monday	19	20	27	27	37	29
Tuesday	15	11	24	30	28	32
Wednesday	18	15	18	28	34	22
Thursday	20	10	23	20	32	29
Friday	24	10	18	26	40	30
Saturday	42	12	18	30	38	31



How common factors overlap

We've identified a handful of common factors in life-altering traffic crashes. They are:



In many crashes, multiple factors overlap. Here are some of the most frequent overlaps:

